

## **Education:**

### **Education Apostolate in Mangalore Province under Bethany Educational Society - Mangalore**

The Bethany Educational Society, Mangalore is a unit of the Congregation of the Sisters of the Little Flower of Bethany. Its Head Office is at Bethany Convent, Mangalore, India. The great intellectual and spiritual giant Mgr Raymond FC Mascarenhas established the Bethany Educational Society, Mangalore with four lady teachers, Sr M Martha BS, Sr M Clare BS, Sr M Lourdes BS and Sr M Gertrude BS who became its nucleus. Branched out to the rural poor of Dakshina Kannada, the society was registered on September 4, 1948.

The thrust of the Society is universalization of primary education, specially the 65% who are below poverty line. Education for peace, harmony, girl child, excellence and relationships are its priorities. The Society is committed with its goal to impart transformative education for Fullness of Life for all especially the poor and the girl children which **Jesus** our Guru gave. The Bethany Educational Society, Mangalore has spread out its branches throughout India.

#### **BES VISION, GOAL, CORE VALUES AND PRIORITIES:**

The BES vision, goal, core values and priorities lay emphasis to make education of the young meaningful and productive.

**BES VISION:** To promote the Glory of God by the holiness of its members and the service of the Kingdom of God

**BES GOAL:** Transformative education towards fullness of life for all especially the poor and the girl children

#### **BES CORE VALUES**

1. God Experience
2. Compassionate love for all, specially the poor and marginalized
3. Communion, collaboration, team spirit
4. Excellence in terms of developing each one's unique potentialities to build a just and humane community
5. Truth, love, justice and peace
6. Simplicity of life style and dignity of labour
7. Respect for life, nature, cultures, religions and love for the nation

#### **BES PRIORITIES:**

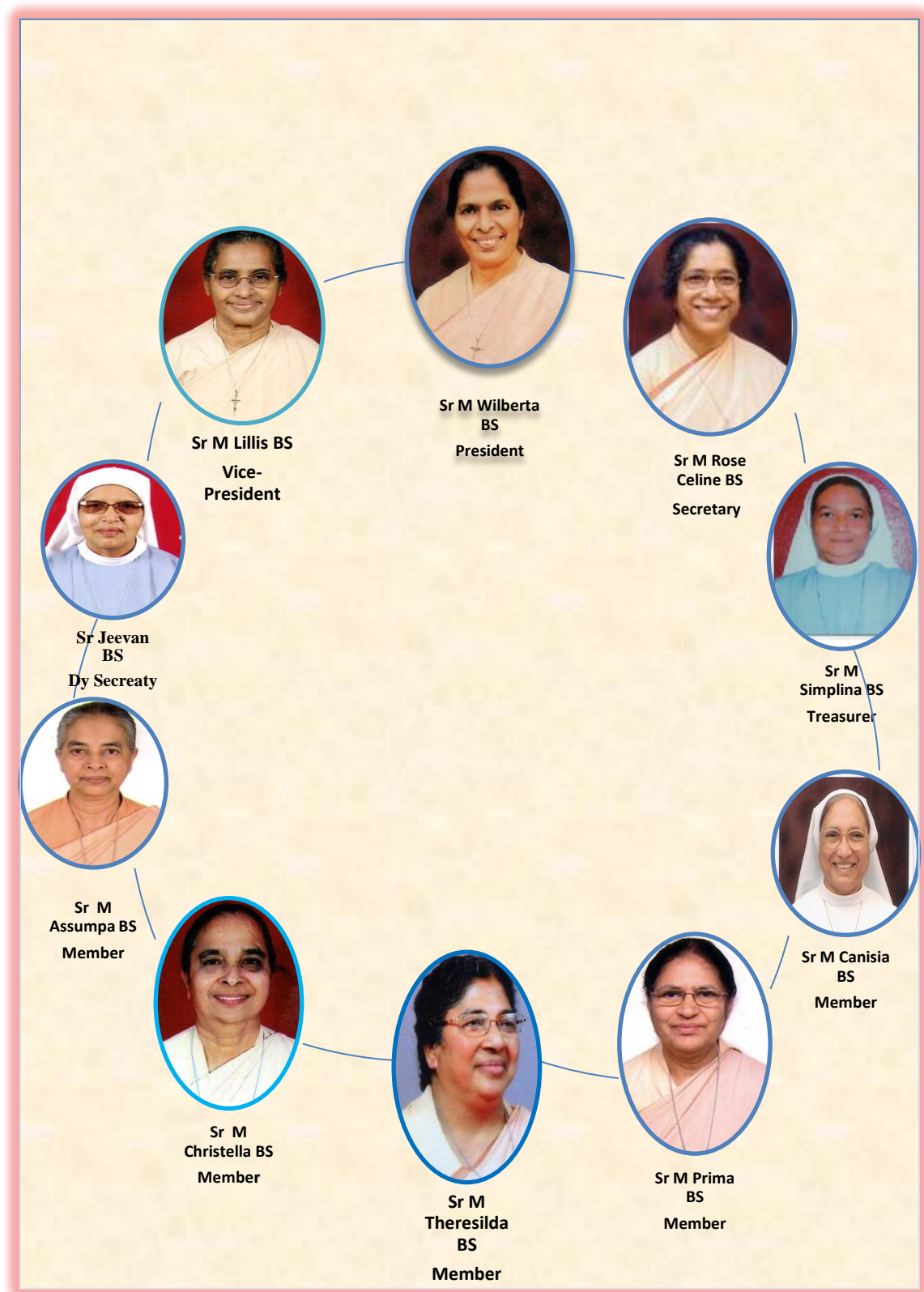
- a) Education for Harmonious Relationships
- b) Education to Empower Girl Child
- c) Education for Peace and Harmony
- d) Education for Excellence for all

**Administrative Structure of the Bethany Educational Society, Mangalore includes General Body, Council of Management, Province Sub-Committees, Local Correspondent/ Manager, Individual schools managed by Local School Managing Committee.**

**Council of Management** consists of President, Vice President, Secretary, Deputy Secretary, Treasurer and five members.

# Council of Management

## Bethany Educational Society, Mangalore (R)



**Province BES:** The Mangalore Province was erected on 07.06.1986. On this day the Province was entrusted with 21 Educational institutions. In the year 2006 the Province BES Sub-Committee was formed to facilitate the administration of the BES Mangalore. Presently there are 39 Educational institutions, both aided and unaided, consisting of Pre-Primary, and Higher Primary Schools, High Schools, PU Colleges, a Degree College and a D. Ed. College.

The Council of Management of BES is collaborated by the Corporate Manager, and Province BES Sub-Committee at the Province level. The Educational Ministry of Mangalore Province is spread over four Dioceses: Mangalore, Udupi, Gulbarga and Gandhi Nagar in Gujarat.

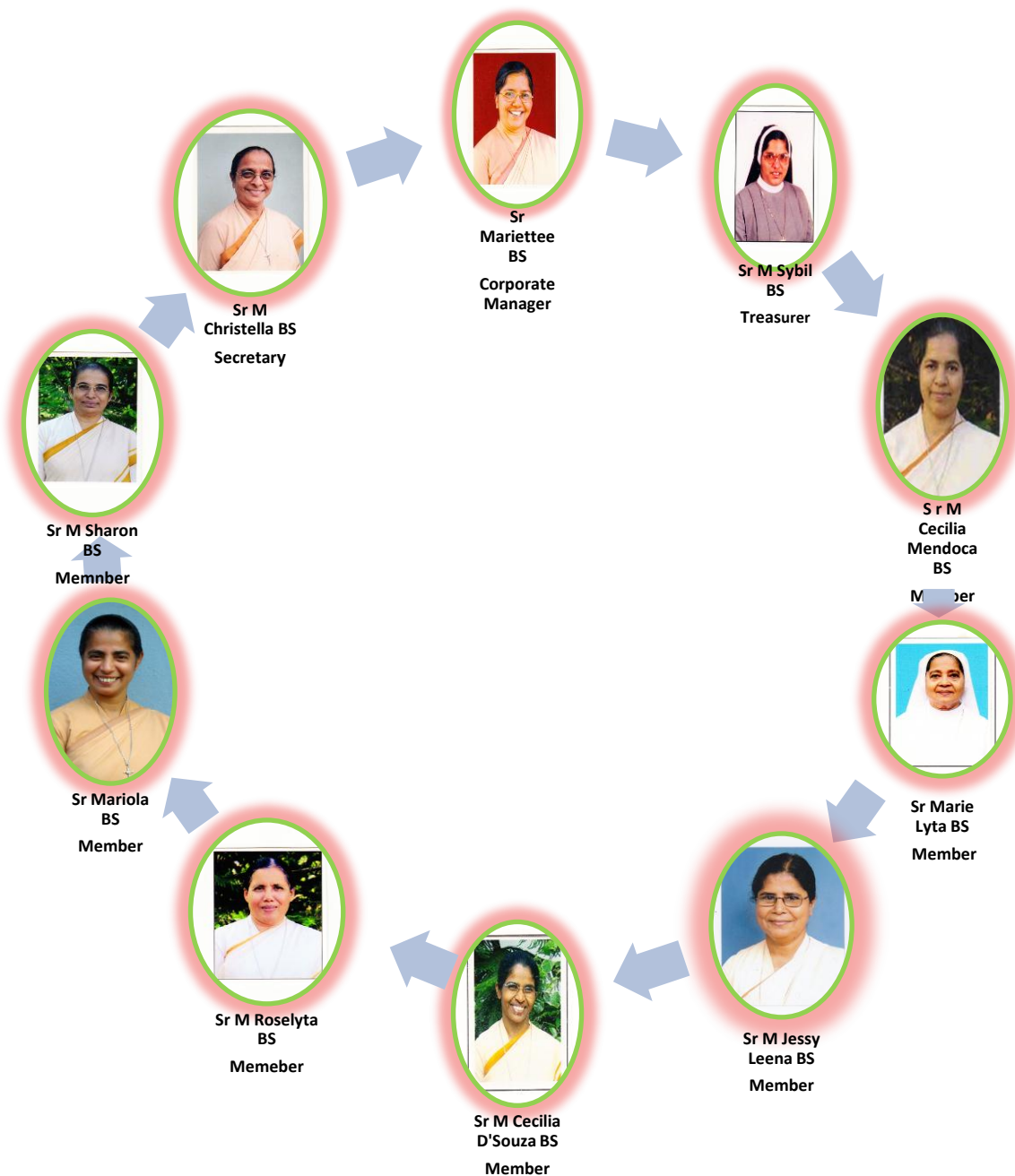
At present Sr Mariette BS is the Corporate Manager of the Province BES. Sr M. Christella BS is the Education Coordinator, of the Province and BES Sub-committee Secretary. The educational endeavours of the Province are directed by the Province BES Sub-Committee.

**Province BES Sub-Committee Members:**

1. Sr Mariette BS	Corporate Manager
2. Sr M Christella BS	Secretary
3. Sr M Sybil BS	Treasurer
4. Sr M Sharon BS	Member
5. Sr M Cicilia Mendonca BS	Member
6. Sr Mariola BS	Member
7. Sr Marie Lyta BS	Member
8. Sr M Roselyta BS	Member
9. Sr M Jessy Leena BS	Member
10. Sr M Cicilia D'Souza BS	Member

# Mangalore Province

## Bethany Educational Society, Sub-Committee Members



# **I. Educational Institutions in Mangalore Province**

## **a) Institutions under Bethany Educational Society, Mangalore in the year 2013-2014**

<b>Institutions</b>	<b>No of Institutions</b>	<b>Strength of Students</b>		
		<b>Boys</b>	<b>Girls</b>	<b>Total</b>
Degree College	01	98	210	308
PU Colleges	05	611	613	1224
D. Ed College	01	-	25	25
High Schools	14	1586	1808	3394
Higher Primary Schools	11	2422	2872	5294
Pre-Primary Schools	07	679	506	1185
Karnataka Open School Vamanjoor.	01	65	25	90
Hostels and Children's' Home	07	-	306	306
Community Colleges	02	-	100	100
<b>Total</b>	<b>49</b>	<b>5486</b>	<b>6440</b>	<b>11,926</b>

## **b) Strength of students in Schools/Colleges under Bethany Educational Society, Manglore for the year School 2013-2014**

<b>Sl. No</b>	<b>Name of the Institutions</b>	<b>No. of Boys</b>	<b>No. of Girls</b>	<b>Total</b>
1	St Raymond`s College, Vamanjoor	98	210	308
2	St Raymond`s P.U College, Vamanjoor	266	262	528
3	St Raymond`s High School, Vamanjoor	164	109	273
4	St Raymond`s Eng Med High School, Vamanjoor	89	63	152
5	St Raymond`s Pry School, Vamanjoor	68	56	124
6	St Raymond`s Pre-Primary School, Vamanjjor	80	54	134
7	Rosa Mystica P.U. College, Kinnikambla	177	148	325
8	Rosa Mystica T.T.I, Kinnikambla		25	25
9	Rosa Mystica Eng Med High School, Kinnikambla	95	108	203
10	Rosa Mystica High School, Kinnikambla	269	233	502
11	Rosa Mystica Hr Pry School, Kinnikambla	275	352	627
12	Rosa Mystica Pre-Primary School, Kinnikambla	18	20	38
13	Sacred Heart High School, Kulshekar	226	314	540
14	Sacred Hearts' Hr Pry Eng Med School,	571	498	1069

	Kulshekar			
15	Sacred Hearts' Pre-Primary School, Kulshekar	186	146	332
16	Madeleine P.U. College, Mulki	49	51	100
17	Madeleine High School, Mulki	133	128	261
18	Madeleine Hr Pry School, Mulki	173	173	346
19	Bethany Hr Pry School, Mulki	234	185	419
20	Bethany High School, Mulki	43	38	81
21	Bethany Pre-Primary School, Mulki	104	57	161
22	Little Flower Hr Pry School, Kinnigoli	----	188	188
23	Little Flower High School, Kinnigoli	90	146	236
24	Little Flower P.U. College, Kinnigoli	47	68	115
25	Maryvale High School, Kinnigoli	153	143	296
26	Maryvale Hr Pry School, Kinnigoli	267	233	500
27	Maryvale Pre-Primary School, Kinnigoli	69	73	142
28	Jyothi P.U. College, Ajekar	72	84	156
29	Jyothi High School, Ajekar	85	61	146
30	St Paul's High School, Balkunje	44	58	102
31	Holy Family High School, Bajpe	58	217	275
32	Holy Family Eng. Med, High School, Bajpe	27	96	123
33	Little Flower Hr Pry School, Bajpe		416	416
34	Bethany Eng. Med. High School, Puttur	110	94	204
35	Bethany Hr Pry School, Puttur	374	295	669
36	Little Flower Hr Pry School, Puttur	401	437	838
37	Bethany Pre-Primary School, Puttur	147	111	258
38	Bethany Pre-Primary School, Humnabad	75	45	120
39	Bethany Primary School, Humnabad	59	39	98
	<b>Total</b>	<b>5,396</b>	<b>6,034</b>	<b>11,430</b>

**C) Number of Staff Members in Schools/Colleges Educational institutions under Bethany Educational Society, Manglore for the year School 2013-2014**

<b>Particulars</b>	<b>Male</b>	<b>Female</b>	<b>Total</b>
Teaching Staff	46	296	342
Non-Teaching Staff	05	80	85

**II. Educational Institutions under Bethany Charitable Trust, Gujarat**

Mangalore Province ventured into Gujarat in 2006 to continue its mission.

**a) Strength of Schools/Hostel for the year 2013-2014**

Institutions	No of Institutions	Strength of Students		
		Boys	Girls	Total
Primary Schools	02	210	87	297
Pre-Primary School	01	90	30	120
Hostel	01	-----	16	16
<b>Total</b>	<b>04</b>	<b>300</b>	<b>133</b>	<b>423</b>

**b) Strength of students in schools/Hostel for the year 2013-2014**

Sl.No.	Name of institution	No of Boys	No of Girls	Total
1	Bethany convent Eng.med. School Limboi Vadagm Gujarat	109	25	134
2	Bethany convent Gujarati Med. School Limboi Vadagm Gujarat	101	62	163
3	Bethany Pre-Primary School Limboi Vadagm Gujarat	90	30	120
4	Bethany Hostel Limboi	-----	16	16
<b>Total</b>		<b>300</b>	<b>133</b>	<b>433</b>

**c) Staff Particulars for the year 2013-2014**

Particulars	Male	Female	Total Strength
Teaching Staff	01	12	13
Non-Teaching Staff	01	04	05

**Hostel Ministry:** Children's homes and Hostels are the integral part of our ministry. They are meant for those girls who are deprived of Primary Education in the remote villages. Christian faith and educational excellence is one of our prime concerns. We suitably prepare them for life.

**III. Hostels/Children's' Home /Orphanages – Girls**

Sl No.	Name of the Hostel	No of Hostlers
1	Infant Mary's Children's Home Kulshekar, DK	76



2	St Joseph's Children's Home, Kinnikambla, DK	63
3	Maryvale Children's Home, Kinnigoli, DK	80
4	Providence Hostel, Balakunje, DK	33
5	Rosa Mystica TTI Hostel, Kinnikambla D.K.	22
6	Jyothi Hostel, Ajekar D.K.	07
7	Shanthi Kiran Hostel, Humnabad, Bidar D.K.	25
<b>Total</b>		<b>306</b>

#### 1V. Informal Education:

- 1 Karnataka Open School: KOS:** Karnataka Open School is a boon for the drop outs to obtain SSLC Certificate in order to continue their studies or to get promotion in their job.

<b>Sl No.</b>	<b>Name of the Karnataka Open School</b>	<b>No of Students</b>
1	St Raymond Karnataka Open School, Vamanjoor D.K.	<b>90</b>

- 2. Community Colleges:** Community Colleges aim at equipping students for jobs or train students to earn their livelihood; girls in villages benefit by these as they are well equipped for self-employment.

<b>Sl No.</b>	<b>Name of the Community Colleges</b>	<b>No of Students</b>
1	Rosa Mystica Community College, Kinnikambla D.K.	25
2	Shanthi Kiran Technical Institute, Humnabad Bidar	75
<b>Total</b>		<b>100</b>



